

Company Profile

Your
**Trusted
Partner**



About Our Company

We are a leading company in the supply sector, fully dedicated to providing comprehensive supply solutions to meet the needs of various industries. The company was established with the aim of supplying high-quality materials and reliable services to businesses operating in construction and manufacturing fields. Supply Cloud's products include a wide range of materials such as seamless pipes, sheets, steel, wood, and various metal works. Our product range also extends to fire protection solutions, where we offer advanced sensors, alarm systems, firefighting panels, and extinguishing boxes.





Our Vision

Our vision is to become a trusted partner that inspires confidence, enhances safety, and supports growth across industries by providing world-class products and services. We aim to set new standards of excellence, offering innovative solutions that meet the evolving needs of our clients. Through our commitment to safety and sustainability, we strive to foster long-term success and drive positive impact in every industry we serve



Our Mission

We strive to provide our clients with high-quality, reliable, and effective safety materials and solutions. Our goal is to help businesses operate securely and sustainably by ensuring the safety of their employees, protecting their assets, and supporting the long-term success of their operations. With innovative solutions and exceptional service, we aim to be the trusted partner in safety for companies across industries.

Our Leadership

Dr. Mohamed El-Gharib

We are keen to achieve our financial and business goals, but we also understand our social responsibility as a company. We strive to promote environmental and social sustainability in all aspects of our business, and we are working towards sustainable goals that add value to society and support sustainable development in the future.

Eng. Mohamed Ashraf

We pride ourselves on our enthusiastic, committed and talented team, who work hard to achieve our vision and goals. We encourage creativity and innovation within the company, and create a strong internal culture centered around the values and goals set by the company.

Our Products



Seamless Pipes

We offer seamless pipes with the highest quality standards, designed to withstand extreme pressure and temperature. Thanks to their weld-free construction, they ensure superior performance and high resistance to corrosion. These pipes are used in fire-fighting networks, gas distribution systems, and power plants, where durable and safe solutions are required, as well as resistance to high operational pressures. They are made from rust-resistant materials to ensure longevity and are available in various diameters and thicknesses to suit different projects.

Seamless Pipes

A seamless pipe is a tube that does not have any welding seam. Seamless pipes are derived from solid steel that is in sheet or bar form and is formed into a solid round shape known as “billets” which are then heated and cast over a form such as a piercing rod to create a hollow tube or shell. A seamless tube may also be known as a seamless pipe. Based on different materials, seamless pipes can be categorized into carbon pipes and stainless steel pipes. According to various applications, seamless pipes can be classified into boiler tubes, mechanical tubes, and seamless casing pipes



Seamless Pipes

Characteristics

Seamless steel pipe for the use of engineering and construction is very widely, it is a hollow steel strip no seams, it is mainly used to transport liquids pipe-lines, different look and general steel, one of those heavy type steel, it has a strong resistance to corrosion, resistant to general corrosion.

Will not rust, this performance makes seamless steel tubes extend the life, the most important is that it is very clean and no toxins.

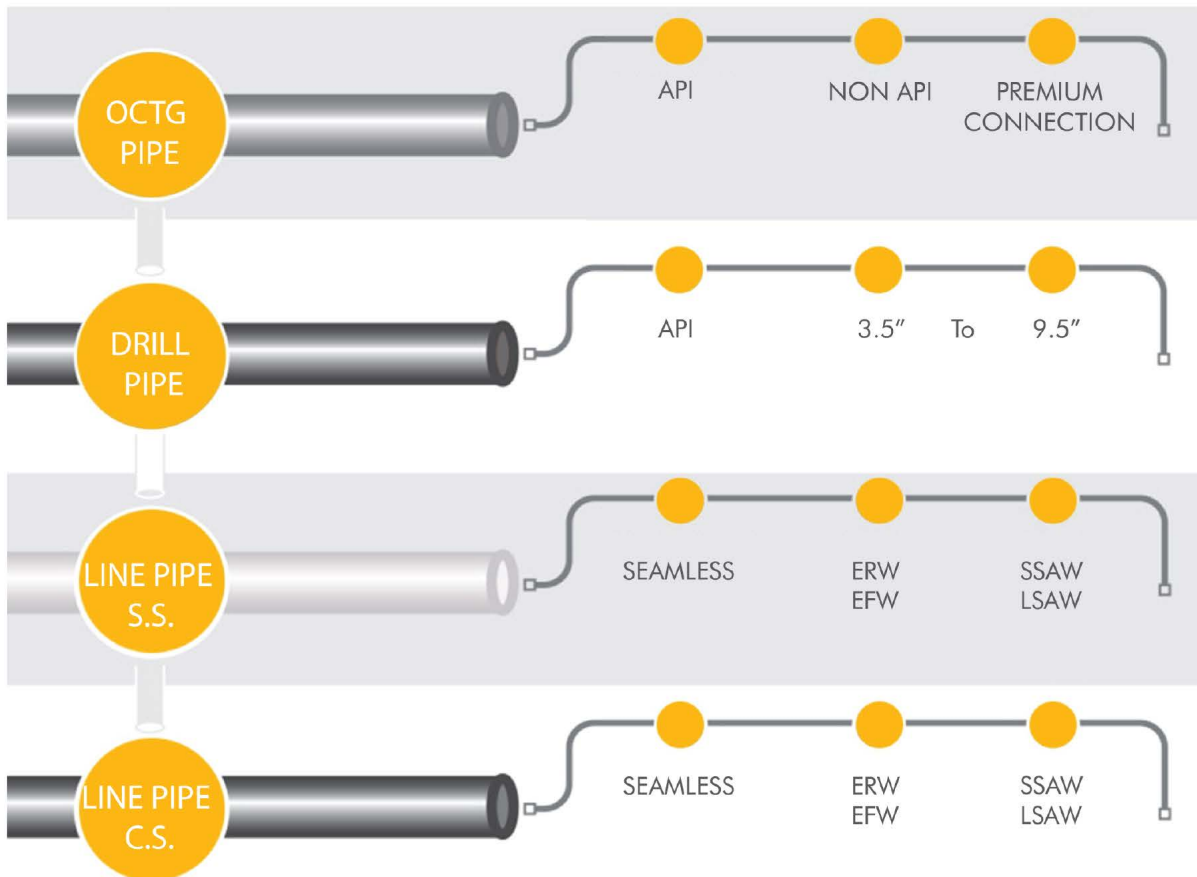
Compared with other plastic seamless steel pipe having strong mechanical resistance, impact regardless of how high a temperature is not interested in the use of seamless steel pipe, it is mounted and the other pipe is the same, can replace other piped water and other liquids.



Seamless Pipes



- > Bare
- > Black Vench
- > Coated



Nominal Pipe Size mm/Inch	OD mm	20	30	STD	40	60	XS	80	100	120	140	160	XXS	Shipping Vol/CBM
15 / 1/2	21.3			2.77	2.77		3.73	3.73				4.78	7.47	0.0004
				1.27	1.27		1.62	1.62					1.95	
20 / 3/4	26.7			2.87	2.87		3.91	3.91				5.56	7.82	0.0007
				1.27	1.27		2.20	2.20					2.90	
25 / 1	33.4			3.38	3.38		4.55	4.55				6.35	9.09	0.0011
				2.50	2.50		3.24	3.24					4.24	
32 / 1 1/4	42.2			3.56	3.56		4.85	4.85				6.35	9.70	0.0017
				3.39	3.39		4.47	4.47					5.61	
40 / 1 1/2	48.3			3.68	3.68		5.08	5.08				7.14	10.15	0.023
				4.05	4.05		5.41	5.41					7.25	
50 / 2	60.3			3.91	3.91		5.54	5.54				8.74	11.07	0.036
				5.44	5.44		7.48	7.48					11.11	
65 / 2 1/2	73.0			5.16	5.16		7.01	7.01				9.35	14.02	0.0053
				8.63	8.63		11.41	11.41					14.92	
80 / 3	88.9			5.49	5.49		7.62	7.62				11.13	15.24	0.0079
				11.29	11.29		15.27	15.27					21.35	
90 / 3 1/2	101.6			5.74	5.74		8.08	8.08				-	-	0.0103
				13.57	13.57		18.63	18.63					-	
100 / 4	114.3			6.02	6.02		8.56	8.56		11.13		13.49	17.12	0.0130
				16.07	16.07		22.32	22.32		28.32		33.54	41.03	
125 / 5	141.3			6.55	6.55		9.53	9.53		12.70		15.88	19.05	0.0199
				21.77	21.77		30.97	30.97		40.28		49.11	57.43	
150 / 6	168.3			7.11	7.11		10.97	10.97		14.27		18.26	21.95	0.028
				28.26	28.26		42.56	42.56		54.20		67.56	79.22	
200 / 8	219.1	6.35	7.04	8.18	8.18	10.31	12.70	12.70	15.09	18.26	20.62	23.01	22.23	0.048
		33.31	36.81	42.55	42.55	53.08	64.64	64.64	75.92	90.44	100.92	111.27	107.92	
250 / 10	273.1	6.35	7.80	9.27	9.27	12.70	12.70	15.09	18.26	21.44	25.40	28.58	25.40	0.074
		41.77	51.03	60.31	60.31	81.55	81.55	96.01	114.75	133.06	155.15	172.33	155.15	
300 / 12	323.9	6.35	8.23	9.53	10.31	14.27	12.70	17.48	21.44	25.40	28.58	33.32	25.40	0.104
		49.73	65.20	73.88	79.37	108.96	97.46	132.08	159.91	186.97	208.14	238.67	186.97	
350 / 14	355.9	7.92	9.53	9.53	11.13	15.09	12.70	19.05	23.83	27.79	31.75	35.71		0.126
		67.90	81.33	81.33	94.55	126.71	107.39	158.10	194.96	224.65	253.56	281.70		
400 / 16	406.4	7.92	9.53	9.53	12.70	16.66	12.70	21.44	26.19	30.96	36.53	40.49		0.165
		77.83	93.27	93.27	123.30	160.12	123.30	203.53	245.56	286.64	333.19	365.35		
450 / 18	457.2	7.92	11.13	9.53	14.27	19.05	12.70	23.88	29.36	34.93	39.67	45.24		0.209
		87.71	122.38	105.16	155.80	205.74	139.15	254.55	309.62	363.56	408.26	459.37		
500 / 20	508.0	9.53	12.70	9.53	15.09	20.62	12.70	26.19	32.54	38.10	44.45	50.01		0.258
		117.15	155.12	117.15	183.42	247.83	155.12	311.17	381.53	441.49	508.11	564.81		
550 / 22	558.8	9.53	12.70	9.53	-	22.23	12.70	28.58	34.93	41.28	47.63	53.98		0.312
		129.13	171.09	129.13	-	294.25	171.09	373.83	451.42	527.02	600.63	672.26		
600 / 24	609.6	9.53	14.27	9.53	17.48	24.61	12.70	30.96	38.89	46.02	52.37	59.54		0.372
		141.12	209.64	141.12	255.41	355.26	187.06	442.08	547.71	640.03	720.15	808.22		
650 / 26	660.4	12.70	-	9.53	-		12.70							0.436
		202.72	-	152.87	-		202.72							
700 / 28	711.2	12.70	15.88	9.53	-		12.70							0.505
		218.69	271.21	164.85	-		218.69							
750 / 30	762.0	12.70	15.88	9.53	-		12.70							0.580
		234.67	292.18	176.84	-		234.67							
800 / 32	812.8	12.70	15.88	9.53	17.48		12.70							0.660
		250.64	312.15	188.82	342.91		250.64							
850 / 34	863.6	12.70	15.88	9.53	19.05		12.70							0.745
		266.61	332.12	200.31	364.90		266.61							
900 / 36	914.4	12.70	15.88	9.53	19.05		12.70							0.836
		282.27	351.70	212.56	420.42		282.27							
950 / 38	965.2			9.53			12.70							0.931
				224.54			298.24							
1000 / 40	1016.0			9.53			12.70							1.032
				236.53			314.22							
1050 / 42	1066.8			9.53			12.70							1.138
				248.52			330.19							
1100 / 44	1117.8			9.53			12.70							1.249
				260.50			346.16							
1150 / 46	1168.4			9.53			12.70							1.365
				272.25			351.82							
1200 / 48	1219.2			9.53			12.70							1.486
				284.24			377.79							

SI Units (Metric)
 OD= mm
 Wall thickness = mm
 Weight = Kg/m (plain end mass)
 Material= A106 GrB
 API SL 304/304C
 316/320

High Pressure Fittings



90 Deg



Tee



Red Tee



M/F Elbow



Cross



45 Deg



Union



Hex Head Cap



Reducer



Y-Way



Reducer Nipple



Square Plug Fig



Hex Plug



Hex Nipple



Lock Nut



Hose Nipple



Full Coupling



Half Coupling



Single Nipple



Socket Plain

Supplying of forged and butt-weld fitting, High pressure & low pressure in all sizes, grades from 1/2" to 96" NPS.

MATERIAL	RANGE	GRADE
SS/CS-FORGED/REINFORCED SS/CS-WROUGHT	UP TO - 4" (FORGED)	ASTM A105/A182 F9,F11,F22,F52
	1/4" - 24 (SMLS)	ASTM A234 WPB, A420 WPL6 A860/ SS SP75-GR WPHY 42, 52, 60,65
	26" - 48" WELDED	ASTM A234 WPB, A420 WPL6 A860/ SS SP75-GR WPHY 42,52,60,65
SS-FORGED	UP TO - 4" (FORGED)	ASTM A182 F304/304L F316/316L
SS-WROUGHT	UP TO - 16"	ASTM A403 GR-304/304L, 321/H,904/I&316/316L
CS	UP TO - 16"	ASTM A234 Wp1, Wp5 , Wp9 , Wp11 , Wp22, Wp91
ALLOYS/CS/SS/DSS/SDSS-HIGH TEMP/ Low TEMP ALLOYS		ASTIM A815 UNS 31803, UNS 32750/32760

ASME Butt Weld Fittings



90 Deg



Tee



Red Tee



M/F Elbow



Cross



45 Deg



Union



Hex Head Cap



Reducer



Y-Way



Reducer Nipple



Square Plug Fig



Hex Plug



Hex Nipple



Lock Nut



Hose Nipple



Full Coupling



Half Coupling



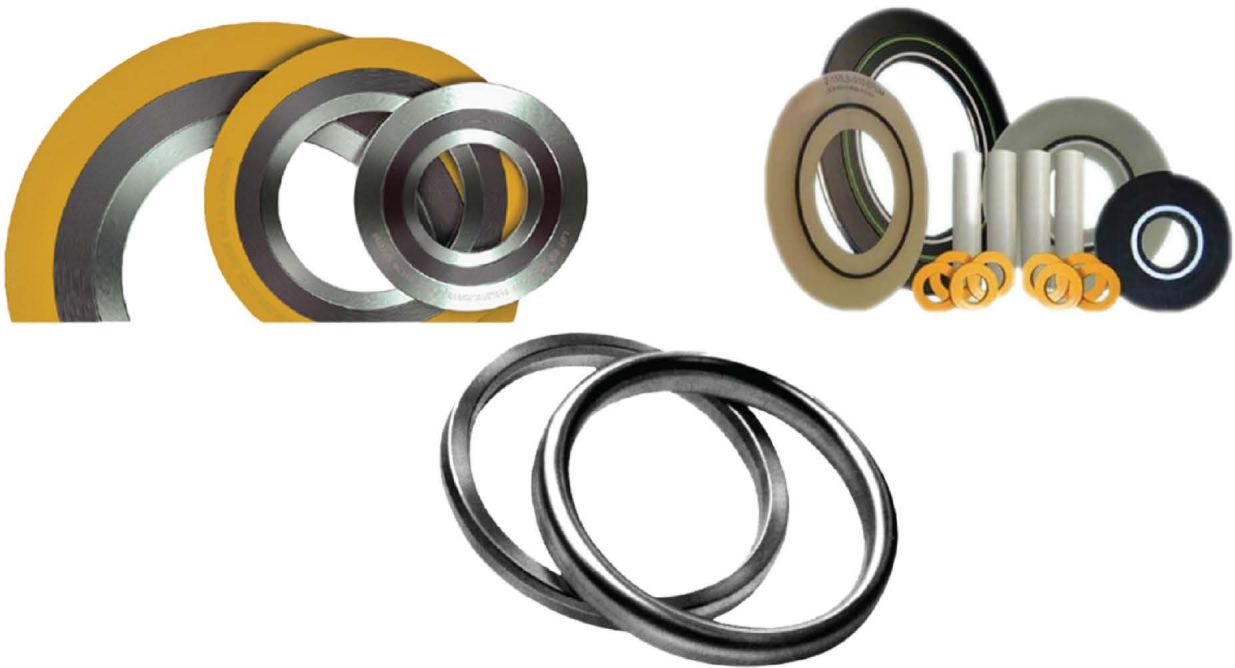
Single Nipple



Socket Plain

Supplying of forged and butt-weld fitting, High pressure & low pressure in all sizes, grades from 1/2" to 96" NPS.

MATERIAL	RANGE	GRADE
SS/CS-FORGED/REINFORCED SS/CS-WROUGHT	UP TO - 4" (FORGED)	ASTM A105/A182 F9,F11,F22,F52
	1/4" - 24 (SMLS)	ASTM A234 WPB, A420 WPL6 A860/ SS SP75-GR WPHY 42, 52, 60,65
	26" - 48" WELDED	ASTM A234 WPB, A420 WPL6 A860/ SS SP75-GR WPHY 42,52,60,65
SS-FORGED	UP TO - 4" (FORGED)	ASTM A182 F304/304L F316/316L
SS-WROUGHT	UP TO - 16"	ASTM A403 GR-304/304L, 321/H,904/I&316/316L
CS	UP TO - 16"	ASTM A234 Wp1, Wp5 , Wp9 , Wp11 , Wp22, Wp91
ALLOYS/CS/SS/DSS/SDSS-HIGH TEMP/ Low TEMP ALLOYS		ASTIM A815 UNS 31803, UNS 32750/32760



Supply of a spiral wound, ring joint gaskets, and another types in all metal grades and constructions as well as insulation kits.

TYPE	RANGE	GRADE
SPIRAL WOUND GASKET	1/4" - 48"	CARBON STEEL/STAINLESS WITH OUTER, INNER RING AND WINDING
NON - ASBESTOS SOFT CUT GASKETS	1/4" - 48"	COMPRESSED FIBER JOINTING MATERIAL-NEOPRENE-EPDM.VITON NBR & SILICON
RING JOINT GASKETS	1/2" - 24"	VARIOUS COMBINATION OF MATERIAL



Metal Trading

Our Metal Trading division is dedicated to supplying a wide range of steel and metal products tailored to serve Egypt's most demanding productive sectors – including construction, manufacturing, infrastructure, and energy.

With a reputation for reliability, precision, and scalability, we provide raw materials and structural steel components essential for high-volume industrial operations and customized applications.

Products



Equal Angles



Hot rolled round bar



Sectors



Wicker



Stainless steel Round Bars



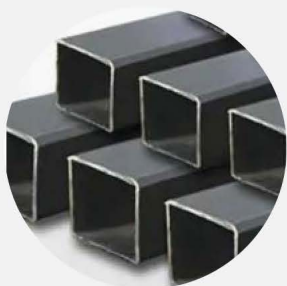
Iron wicker of special lengths



Round Bars



Flats plates (Cold & Hot)



Squares 12 to 40 mm



IPE/IPN 80 to 120 mm



Channels 30*15 to 120*55 mm

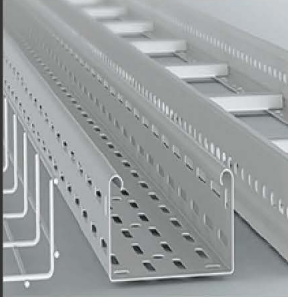


Erw Pipes



Customized Metal Work

At Supply Cloud, we specialize in providing tailored metalwork solutions to meet the unique demands of your projects. From concept to completion, our team ensures precision, durability, and excellence in every piece. We proudly serve diverse industries, including construction, manufacturing, and interior design, bringing expertise and innovation to every sector.



Cable Tray



Rack System



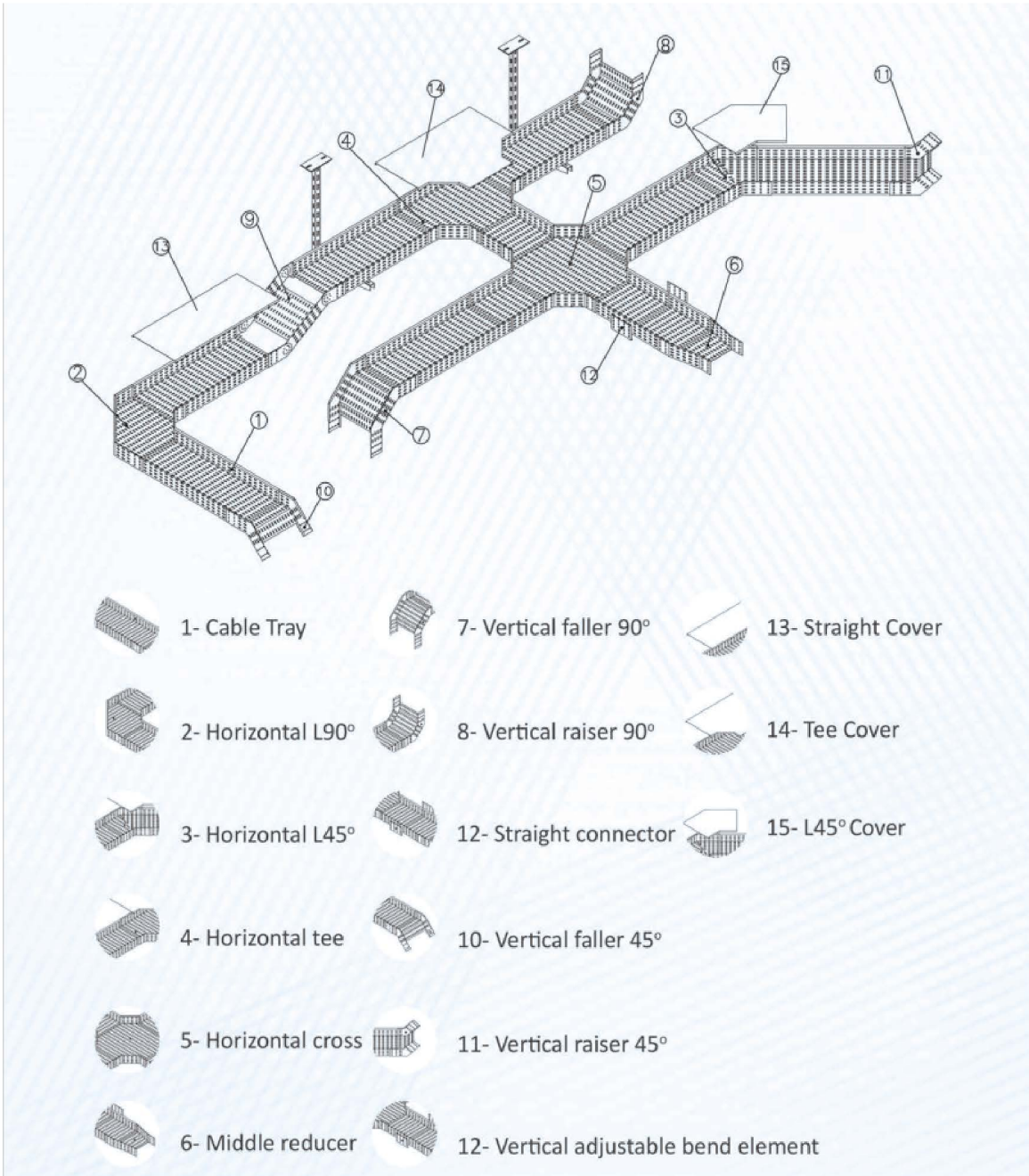
Productive Machining



Staircase, Grating and Handrails

Cable Tray

Cable Trays are offered in a comprehensive range in Galvanization, Material and Types our factories.



Cable Tray Types



Ladder



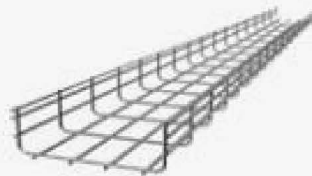
Solid-bottom



Trough



Channel



Wire Mesh



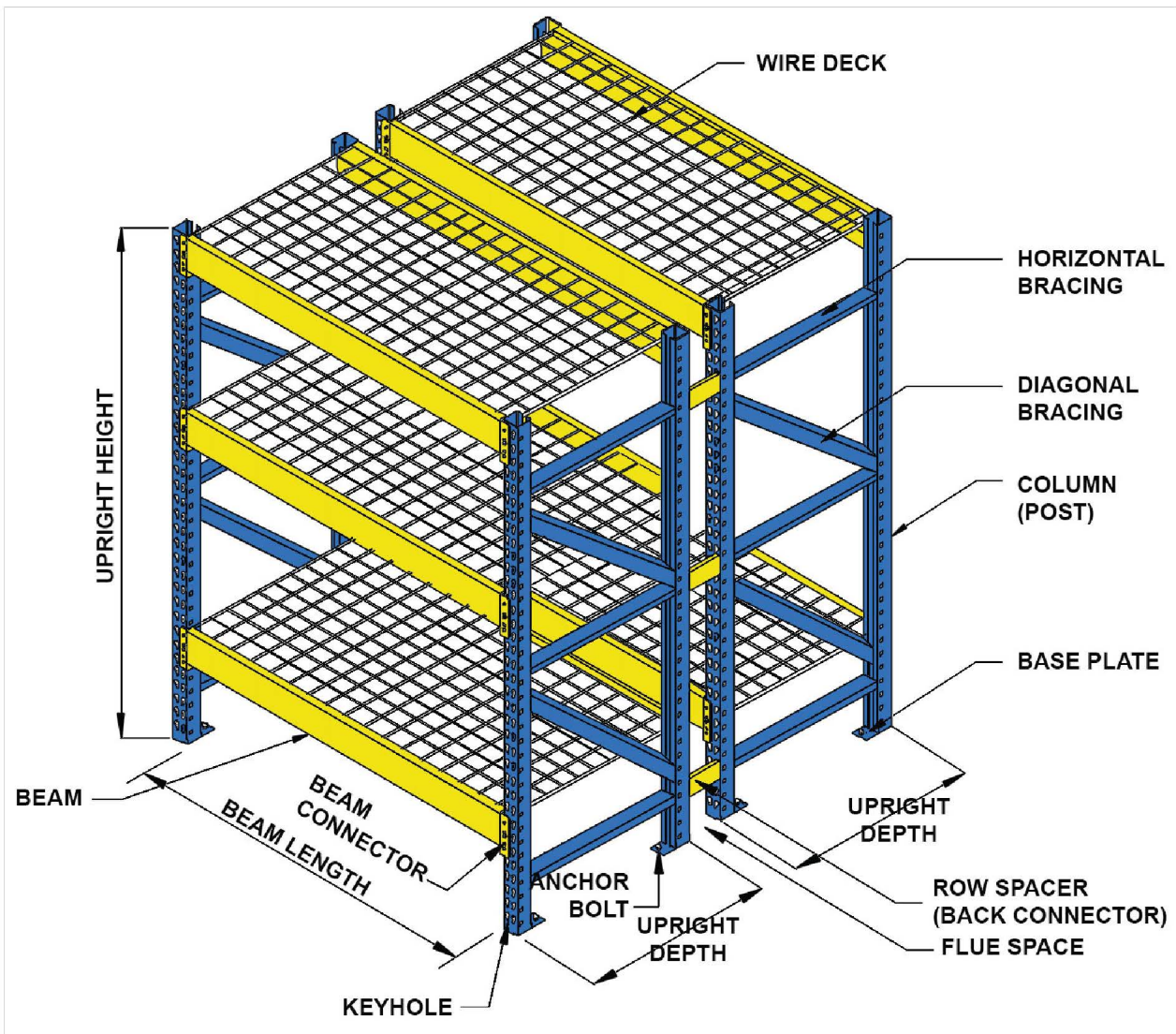
Single Rail

Cable Tray

- Cable trays come in a variety of sizes and materials, including steel, aluminum and fiberglass
- They can be designed for both indoor and outdoor installations.
- They can be installed overhead, on walls, or under raised floor
- They provide a convenient and efficient way to route power, data, and communication cables.



Rack System Components



Rack System

Our Rack Systems are engineered to provide efficient, scalable, and durable storage solutions across a wide range of industries. Designed for maximum load-bearing, ease of access, and space optimization, our racking structures are ideal for both heavy-duty warehousing and light commercial use.



Rack System Features

Modular Design

Configurable to fit any warehouse or storage space layout.

Heavy Load Capacity

Built to handle medium to ultra-heavy palletized goods

Durable Materials

Fabricated from high-grade galvanized or powder-coated steel

Tool-less Assembly Options

Fast installation with boltless locking mechanisms

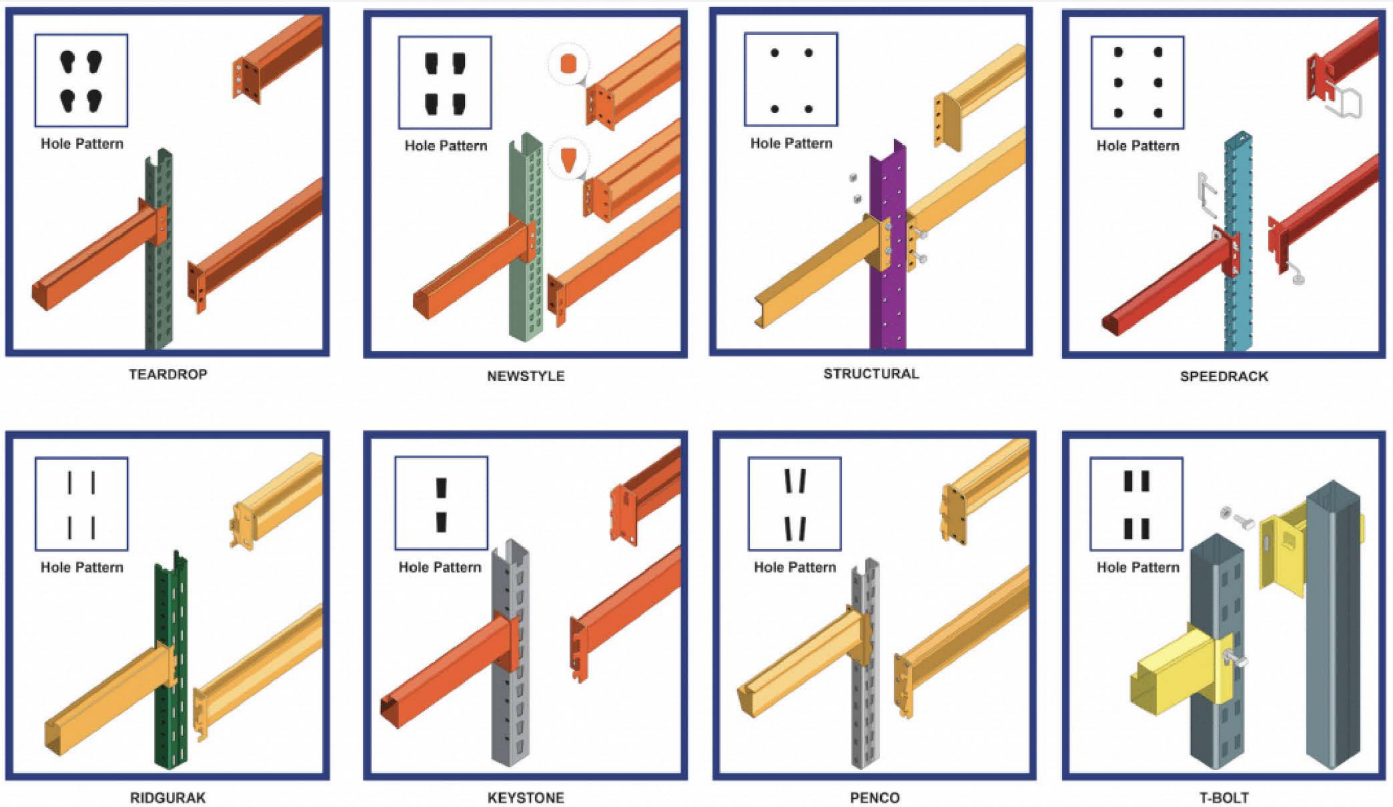
Custom Sizes & Finishes

Available in various dimensions, colors, and specifications

Rack System Types

There are many different types of pallet racking. We've compiled an easy to follow style guide so that you know what to expect before you buy. Read through our guide to learn about the 8 most popular types of pallet rack.

Be aware that not all styles are compatible with one another. Refer to this guide to ensure that you choose compatible pallet racking when making your final decision.



Staircases

Metal Stair Systems

We design and manufacture high-quality metal staircases suitable for industrial facilities, administrative buildings, power stations, and factories.

Our stair systems are engineered for durability, safety, and ease of access—offered in various configurations such as straight, spiral, and multi-flight designs.

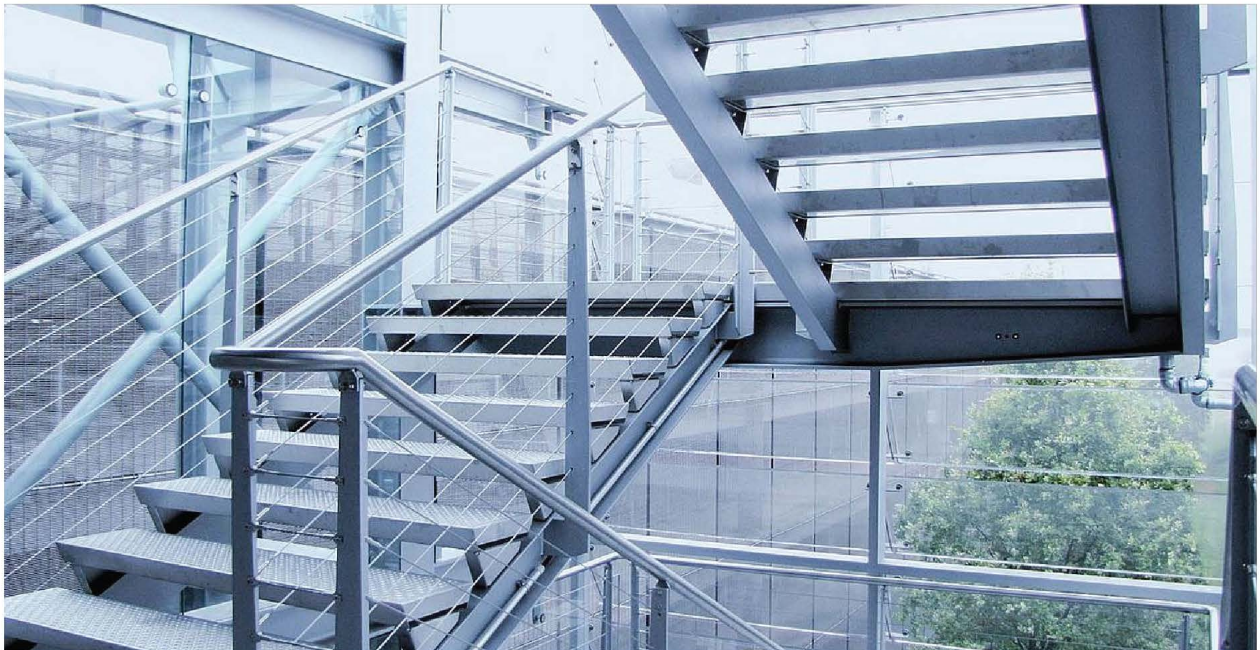
Each unit is fabricated to meet Egyptian and international codes, with optional hot-dip galvanization for long-term corrosion resistance.



Common Industrial Stair Configurations

Staircases

Metal Stair Systems

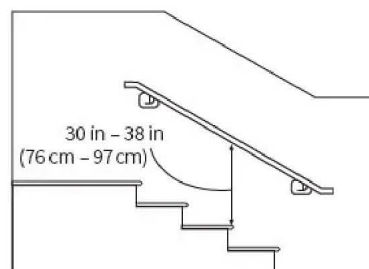
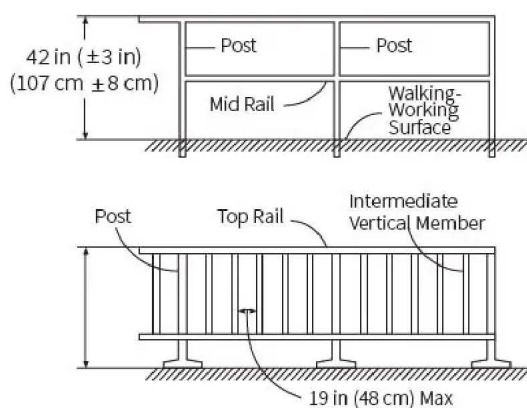


Handrails Safety Barrier Systems

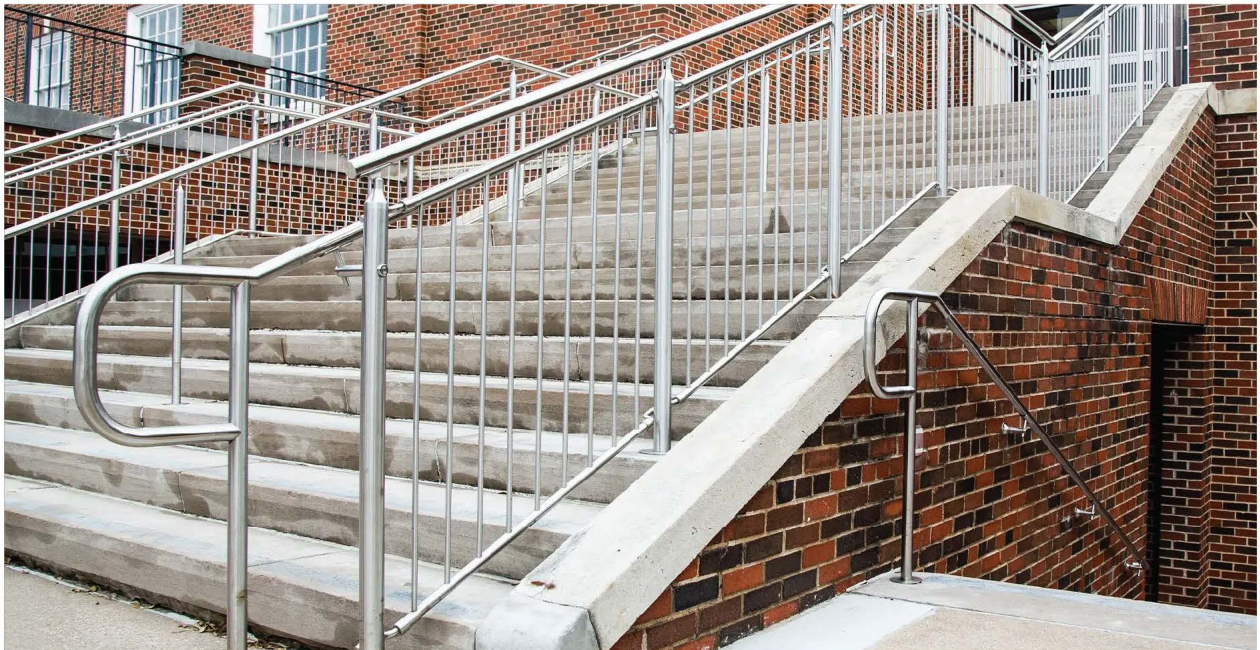
Our handrail systems are designed to provide reliable fall protection on staircases, platforms, and walkways in industrial environments.

Fabricated from steel or stainless steel, our rails comply with OSHA and EN ISO safety standards.

We offer various styles (tubular, square, ornamental), with fixed or modular installation, and finishing options such as galvanization or weather-resistant coatings.



Handrails Safety Barrier Systems



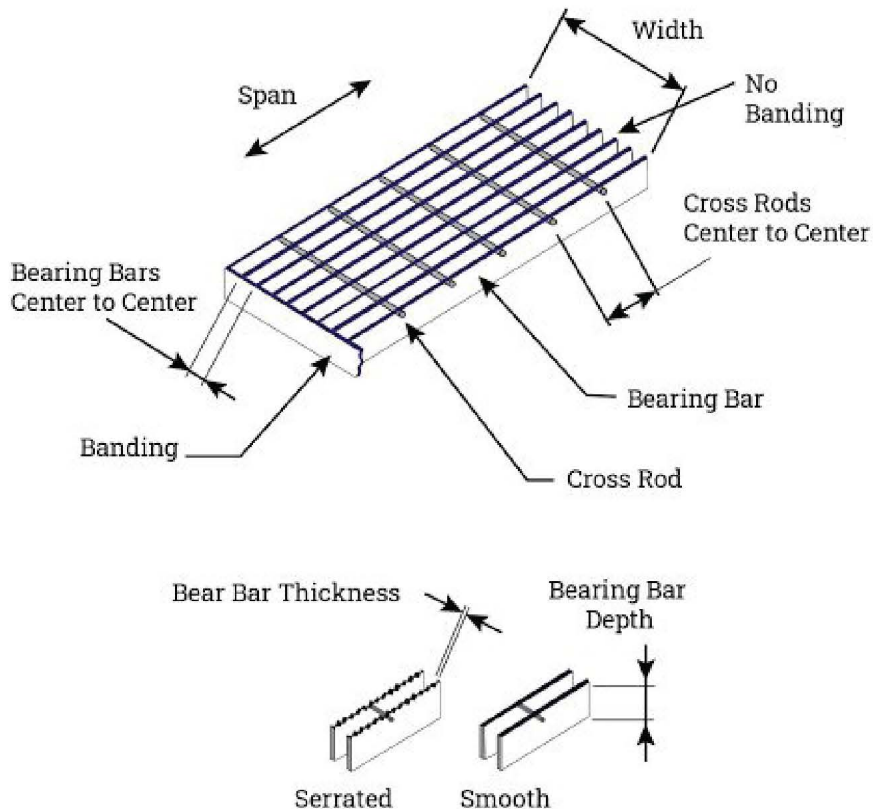
Gratings

Industrial Floor Gratings

We offer precision-manufactured steel gratings, including flat bar, serrated, and press-locked types, ideal for walkways, drainage covers, and elevated platforms.

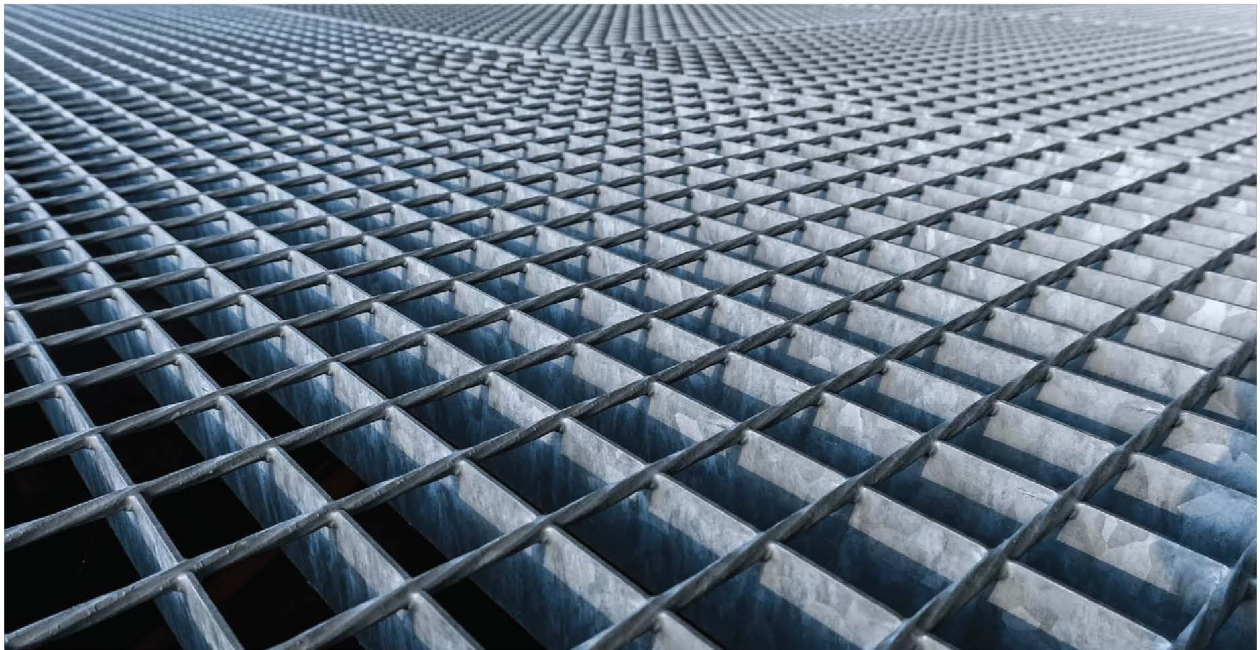
Our gratings are made from galvanized steel or stainless steel, with high load-bearing capacity and exact dimensional control.

Custom fabrication is available to match your required spacing, layout, and mounting system (clip-fixed or welded).



Gratings

Industrial Floor Gratings





Pre-Engineered buildings (PEB)

Pre-Engineered Buildings (Prefabricated Steel Building or PEB, often used for factories, warehouses, hangars, etc.) allows for flexibility in design, so we can optimize the building's utilities for aesthetics and end-user experience.

Product Features

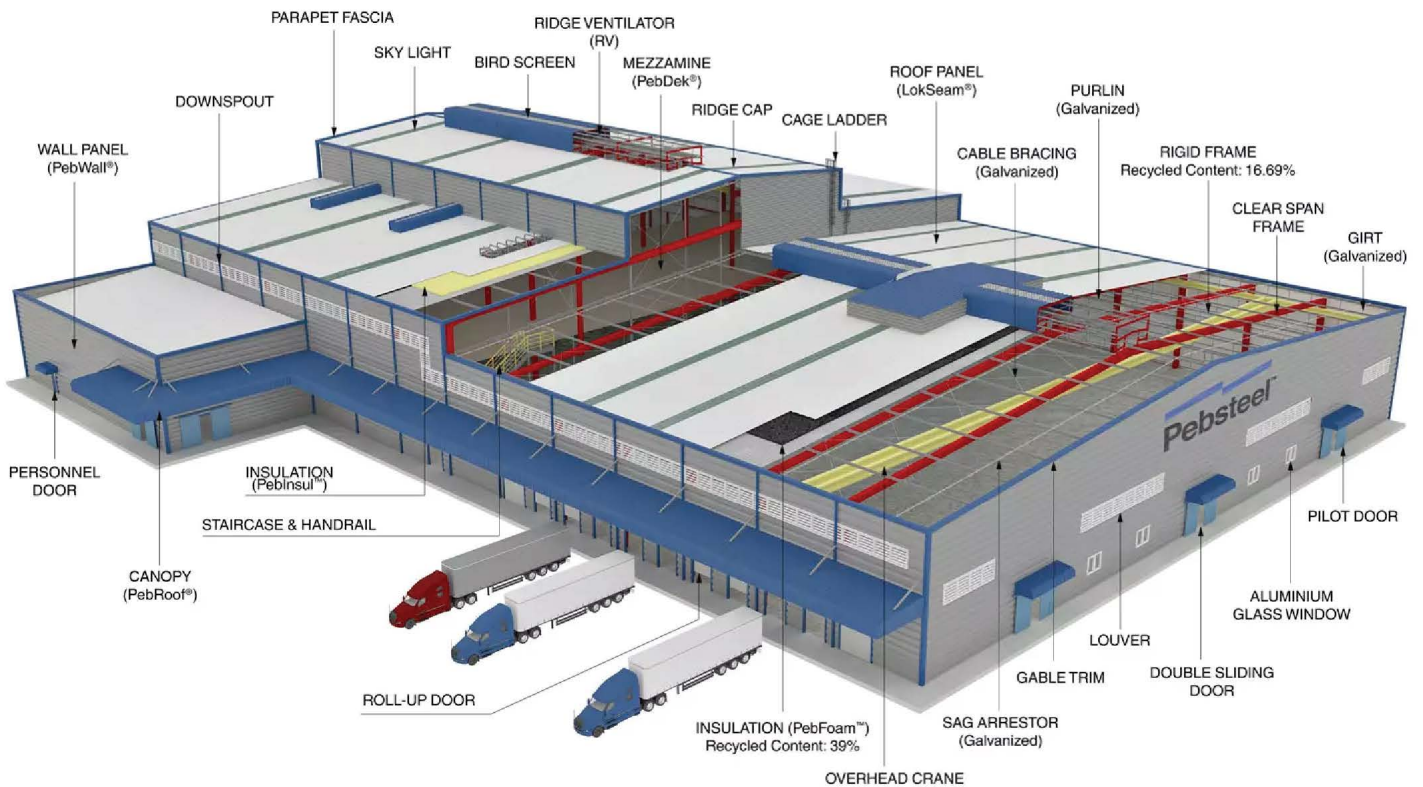
Optimum cost

Premium products

Speedy and efficient process

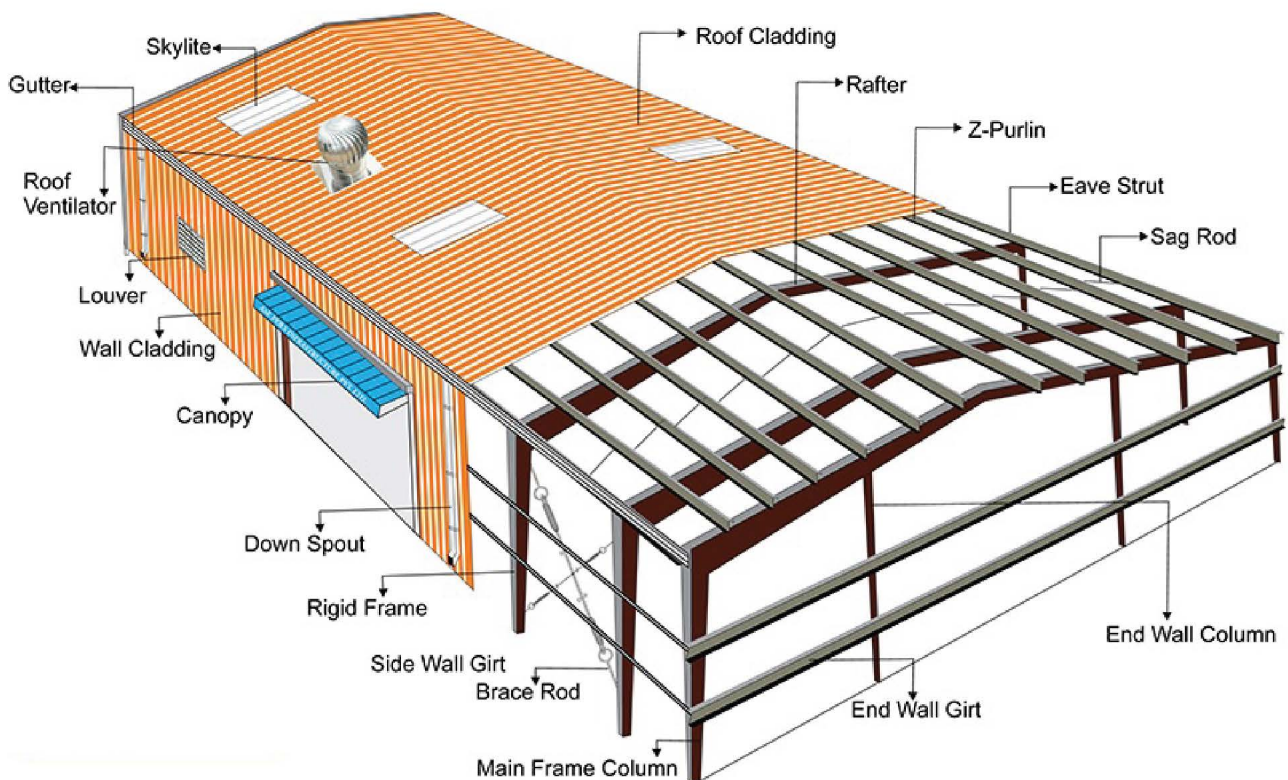
Functional versatility & architectural flexibility

Low maintenance and operating cost.

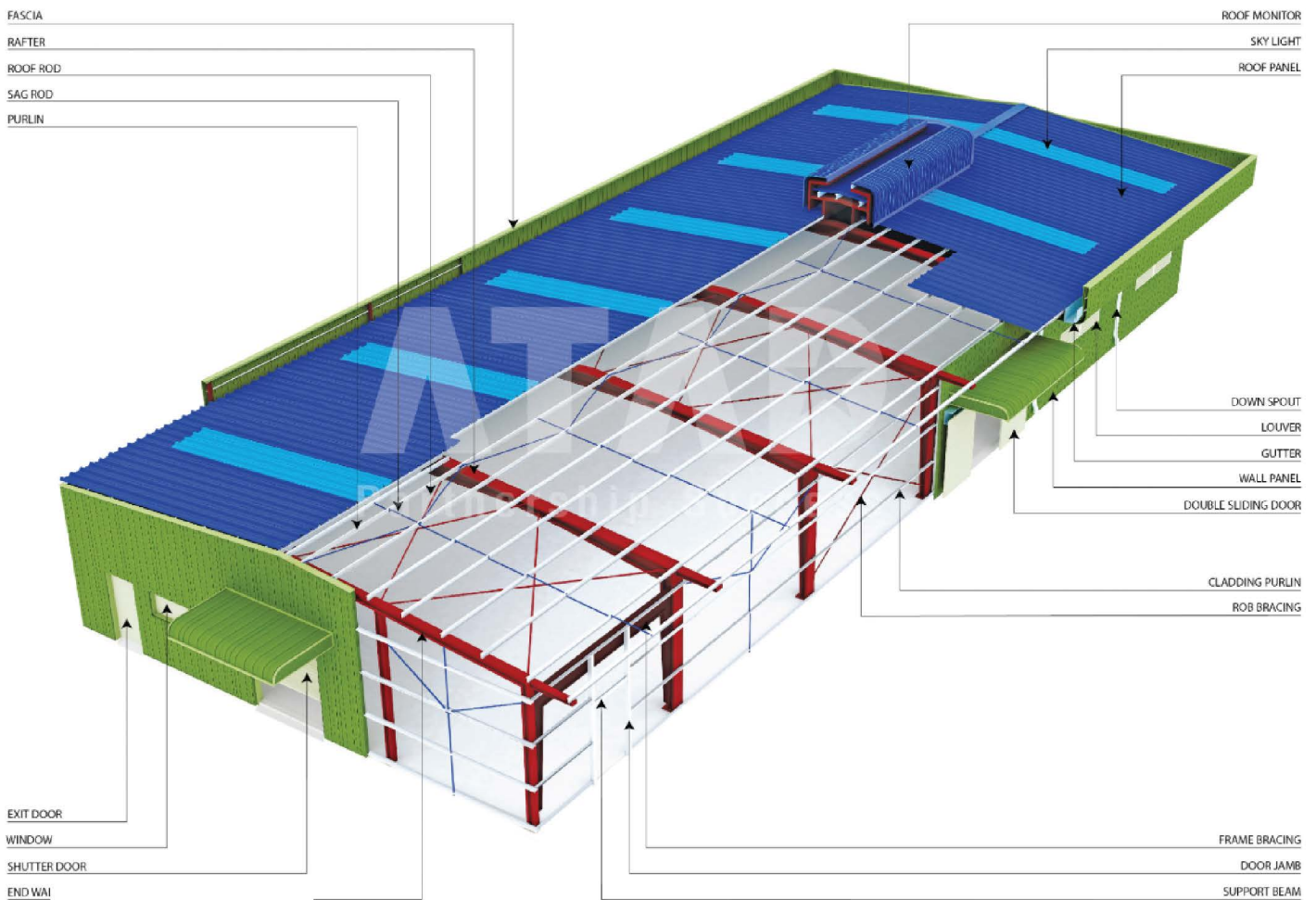


The Basics of Foundation Design in Pre-Engineered Buildings

Pre-engineered Building construction is a new age technology where buildings can be constructed in concerning half the moment as contrasted to physical. The key structure in a PEB is constructed from steel. Wall surfaces, as well as roofing system claddings, have insulated sandwich panels or single-skin sheeting depending on the structure kind and need. The foundation design in a PEB is a crucial component. The dimensions and also heaviness differs based on the structural weight of the building. So will its style. In this message, we will dive deeper and also have a look at some of the standards of foundation style in a PEB.



Model of pre-engineered buildings





Wood Trading

We take pride in our company in offering a diverse and distinguished range of the finest types of natural wood, including red beech wood, musky wood, white wood, and oak wood. These woods are characterized by their high quality and natural beauty, making them the ideal choice for your projects



White Wood

This type of wood is known for its light weight and ease of handling, making it ideal for simple woodworking tasks and suitable for light construction works such as doors, windows, and interior decorations. It is characterized by its ease of shaping, affordable price, and is easy to cut and process.



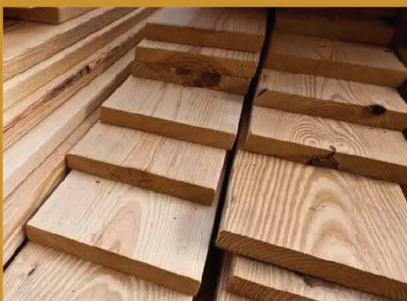
Beech Wood

Beech wood is a hardwood known for its durability and strength. It is widely used in the production of high-end furniture and flooring due to its toughness and resistance to cracking. It is characterized by its light color and high ability to be shaped and painted.



Swedish Wood

Swedish wood, also known as Möski, is considered a softwood with a smooth texture and light color. It is used in both interior and exterior carpentry due to its ease of handling and suitability for concrete work. Its advantages include being lightweight, easy to cut, and capable of being painted and polished, making it a good choice for finishing.



Azizi Wood

This type of wood is distinguished by its hardness and high resistance to wear and moisture, making it suitable for use in harsh environments and projects that require high durability. Azizi wood is used in various applications, including outdoor furniture and boats, due to its resistance to corrosion and weathering.

White Wood



Origin

Sweden, Finland

Characteristics

Lightweight, easy to work with, and cost-effective. Ideal for general construction, interior fittings, and decorative elements.

Applications

Doors, windows, moldings, and light structural frameworks.

Beech Wood



Origin

Europe

Characteristics

Hard, durable, and resistant to wear. Exhibits a fine, tight grain and a pale cream color

Applications

High-end furniture, flooring, and cabinetry

Swedish Wood



Origin

Sweden, Finland

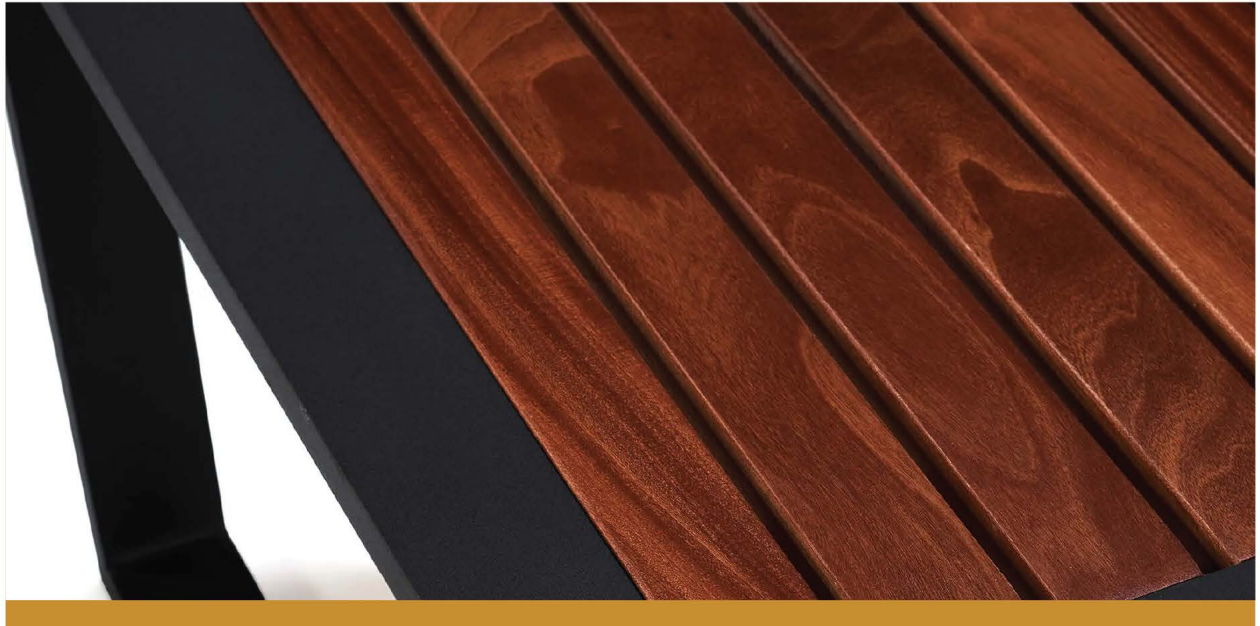
Characteristics

Moderate hardness with excellent workability. Known for its straight grain and uniform texture

Applications

Structural beams, flooring, and paneling

Azizi Wood



Origin

West Africa

Characteristics

Lightweight with a pale yellow hue. Easy to machine and finish.

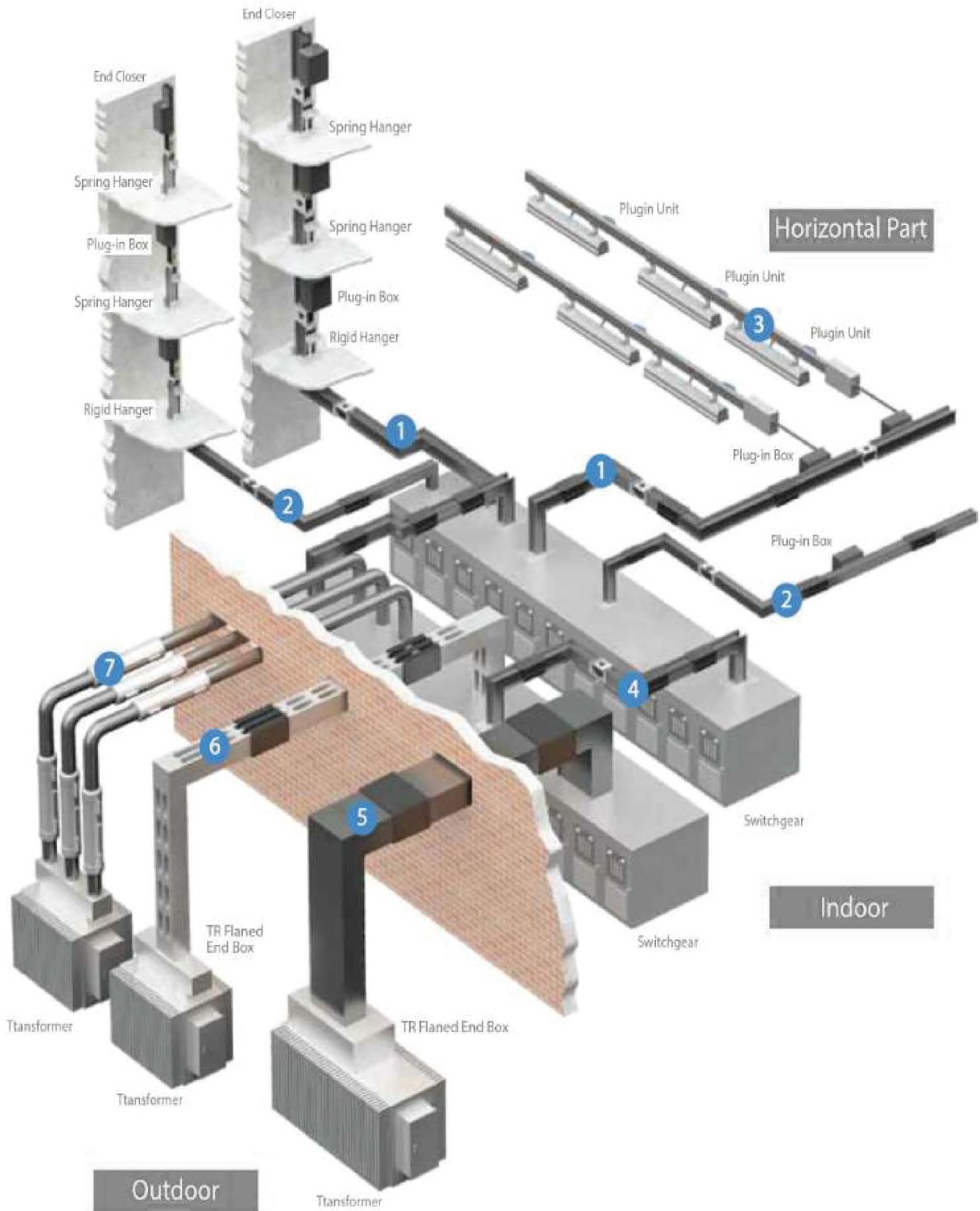
Applications

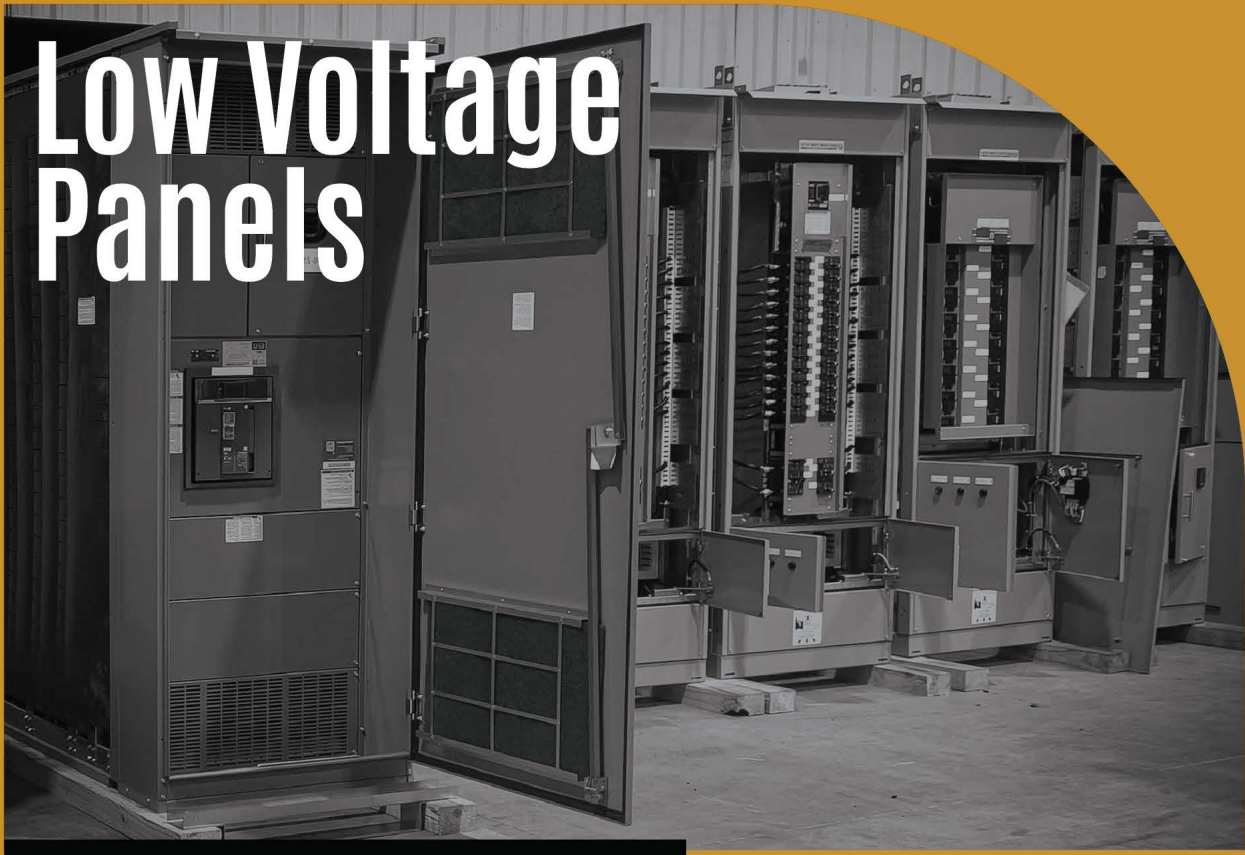
Interior joinery, veneers, and carving.

A graphic showing several colorful electrical cables (red, blue, green, orange) with a bright blue lightning bolt striking between two red cables.

Electrical Solutions

Supply Cloud is proud to announce its success in becoming the exclusive distributor for El-Meligy Factories to distribute its products in the Gulf countries. El-Meligy Electrical Industries was established in early 2003 by Engineer Mohamed Gomaa El-Meligy, and the company started by manufacturing electrical panels and busbar systems





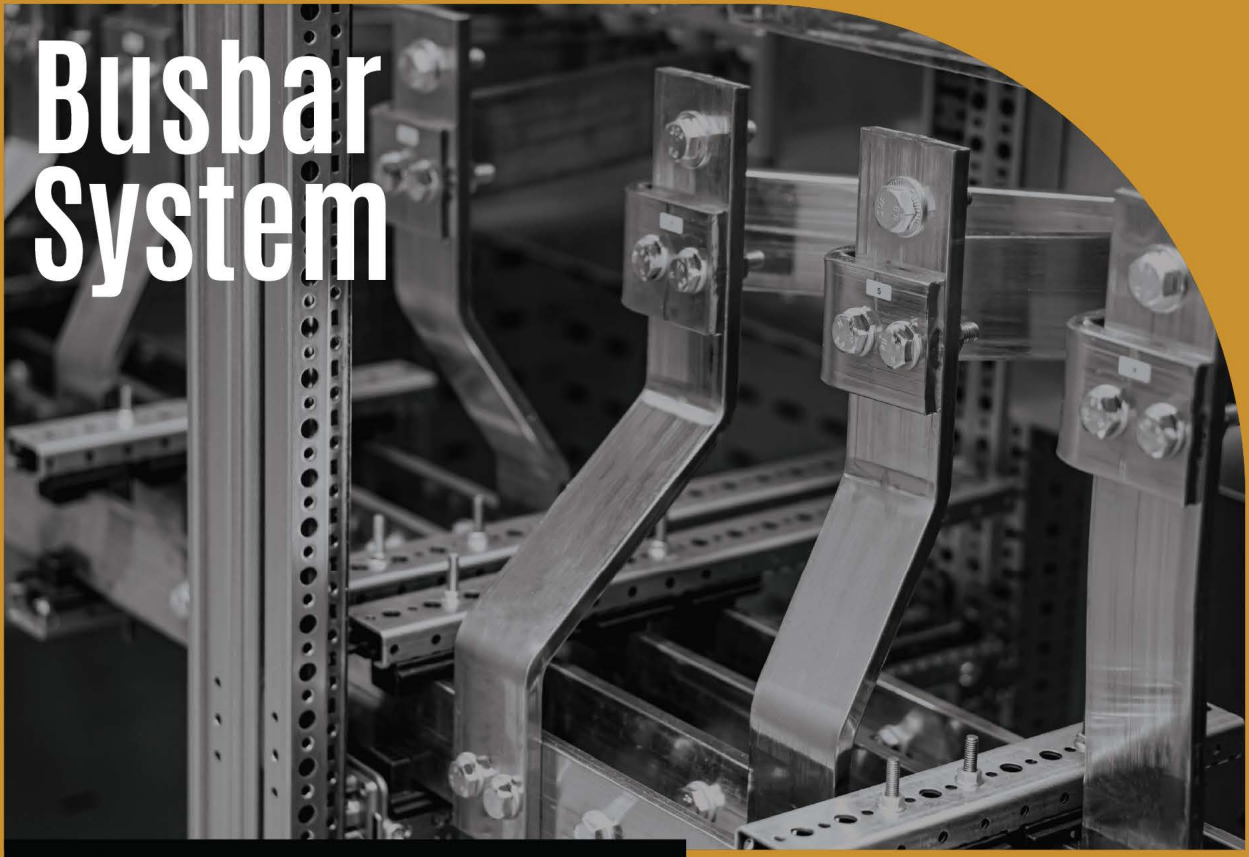
Tested and approved by the Egyptian Electricity Holding Company as well as certified by Schneider Electric. These panels include :

Low voltage panels up to 6300 Amps.

PLC panels.

Power factor correction panels.

Energy poles.



Busbar System

Features a compact design that requires less space compared to traditional cable systems. Its features include:

The busbars' ability to absorb the heat generated during the transmission and distribution of electricity

An improved cooling system that outperforms traditional cable systems

High flexibility, allowing the system to be easily modified to fit any structure or configuration

Lower resistance, reducing energy loss during transmission and distribution

Features

AMG Busbar Trunking system, manufactured by Almeliegy Electric, offers a complete line of compatible, sandwich-type feeder lengths and fittings. It allows maximum flexibility, ease of installation, and offers electrical efficiency in the distribution of low voltage power for both commercial and industrial applications.

AMG busway has been used to supply power in thousands of installations. Our broad range of AMG busway products feeder styles from 800-4000 A with aluminum conductors and up to 6000 A with copper conductors. Busway are constructed in three-pole and four-pole full neutral configurations for system voltages to 600 V and are rated to allow 100% of the current to flow continuously.

Busway installation is quick and easy. The compact, totally-enclosed design is lightweight and easy to handle. This significant reduction in installation time can result in total installed cost for busway being significantly lower than other distribution methods.

When you need busway, select the best: AMG busway. No matter how you compare, AMG busway is your solid first choice!

Sandwich Construction

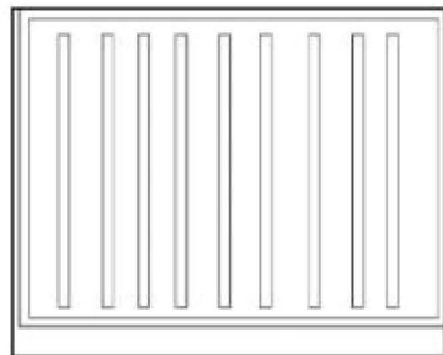
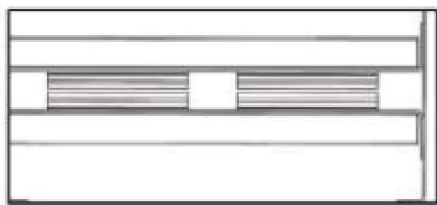
AMG feeder busway utilize sandwich-type construction to provide superior voltage drop characteristics, even at low power factors.

Steel housing sides and tops and bottoms have been carefully designed to reduce component weight and minimize the hysteresis and eddy current losses.

Totally Enclosed Housing

Ventilated busway depends on free air movement through aperforated housing to cool the bus bars.

Unless mounted in its preferred position (for maximum bus bar cooling) ventilated busway must be derated. Ventilated housing also permits dirt accumulation and offers limited protection of bus bars due to open ventilating slots in the housing.



Rated service current		Permissible rated peak current		Rated insulation voltage	Color	Line components	
Aluminum	Copper	Aluminum	Copper			Length of Components	Number of Conductors
800 A	800 A	56 K A	--	1000 V	Oyster - White (RAL 7011) Or light grey (RAL 1313)	UP TO 3 m	3L 3L + N or 3L + PE or 3L + N + PE
1000 A	1000 A	56 K A	80 KA				
1250 A	1250 A	117 K A	--				
1600 A	1600 A	117 KA	80 KA				
2000 A	2000 A	143 K A	143 KA				
2500 A	2500 A	176 K A	176 KA				
3200 A	3200 A	220 K A	176 KA				
4000 A	4000 A	220 K A	220 KA				
	5000 A		220 KA				
	6300 A		275 KA				
			275 KA				

AMG busbar is intended for high power transport in harsh environments and critical buildings. The system is made of prefabricated sections adapted to all run configurations.

AMG is compliant with the standard IEC (61439-1).

ratings are available, from 800 to 4000 A for aluminum and from 800 to 6300 A for copper.

3 to 5 conductors with identical cross-sections address the following configurations: 3L, 3L+PE, 3L+N, 3L+PEN, 3L+N+PE.

Degree of protection is IP54

Insulation voltage: 1000 Volts

AMG can be installed edgewise, flat or vertically without derating its design allows the busbar to be installed through a floor slab or fire barrier wall.

Conductors

Conductors have a rectangular section with full rounded edges and are available in two versions: Electrolytic-Copper Cu ETP 99.9% - bare copper.

The not encapsulated connection pads of the made to measure end feed units are tin plated

Aluminum EN AW 6101b - tin plated along the entire surface.

Special Busway Construction

This section outlines requirements for busways with features other than our standard.

Special Paint

AMG busway can be provided in colors other than RAL7011 Iron grey for an additional fee. The special color requested should be specified by an RAL color code at the time of order entry. With typically lengthened lead times for special color parts, it is imperative to provide this information as early as possible in the order process so delivery commitments can be met.

Low Current Density Busway

Some customers require a lower current density busway than our standard for rigorous duty in their installation. Almeliegy electric has developed a range of busway for the most commonly requested current density of 1000 A per square inch for copper busway and 750 A per square inch for aluminum busway. If you require this current density for your installation, specify it, and we can meet your need.

Riser Plug-In Busway

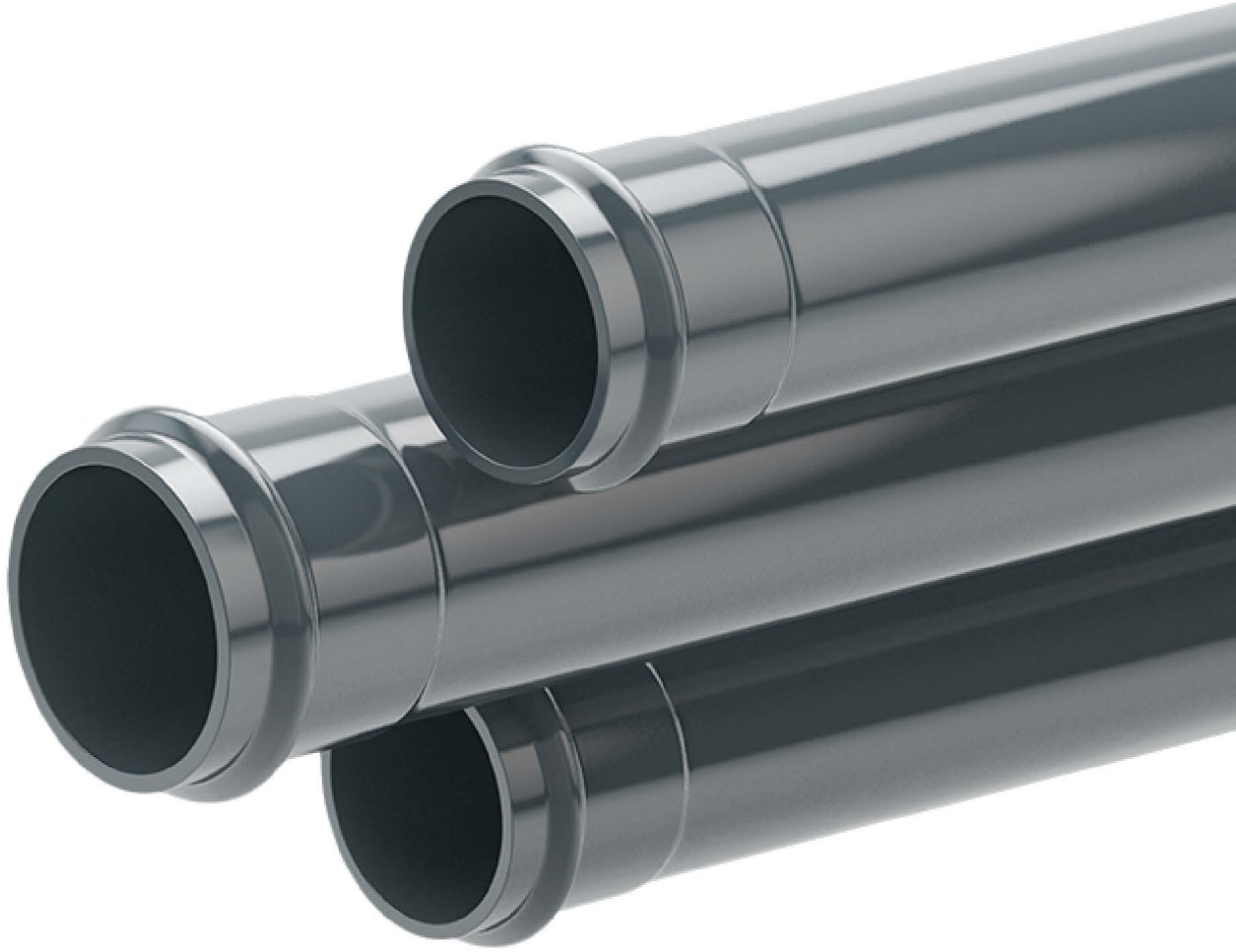
Almeliegy Electric also offers an AMG plug-in busway specifically designed for installation in riser closets of high-rise buildings. This plug-in busway has a plug-in door on the front side that faces out into the room.

The back of the busway, that faces the wall, is blanked off with a feeder bus side rail. This design provides a plug-in busway ideally suited for riser cabinets and gives the customer only the necessary plug-in openings.

Splash Resistant Busway

Some indoor busway is subject to occasional water exposure, such as roof leaks or sprinklers. While this application does not require the full protection of outdoor busway, additional protection is needed for the indoor busway. The splash resistant feature is tested to the International IEC 60529 standard and is rated as IP54. This rating specifies protection from dust and water ("splashed from all directions with limit ingress permitted").

This feature is available as an option with indoor plug-in and feeder busway. To maintain the UL label, however, an IP54 rating product needs to be sized as a "Low Current Density Busway."



UPVC

UPVC pipes (Unplasticized Polyvinyl Chloride) are a modified version of PVC from which plasticizers have been removed, making them more rigid and less flexible. These pipes are primarily used in applications that require greater durability and high resistance to environmental factors.



**Sewer
Pipes**



**Pressure
Pipes**

UPVC Pressure System

We produce UPVC pressure pipes according to "DIN 8061 – DIN 8062 – ES 848 – EN ISO 1452-2" from diameter 20 mm up to 1200 mm in gray color at "16 – 10 – 6 – 4" bar. Pipes are produced according to "BS 3505 – BS 3506" from diameter ½" up 2"

UPVC Sewer System

We produce UPVC sewer pipes according to «ES 1717/2008 – ISO 4435 – ISO EN 1401» from diameter 110 mm up to 1000 mm in gray color «SN2 – SN 4 – SN 8». Sewer under gravity pipes produced according to DIN 19534. Sewer "DWV" pipes produced according to DIN 19531.

UPVC Pressure Pipes

UPVC pressure pipes according to (DIN 8061 - 8062) and Egyptian standards 848-1/2001

Size MM	Class 2 - 4 Bar		Class 3 - 6 Bar		Class 4 - 10 Bar		Class 5 - 16 Bar	
	Thick MM	Weight KG	Thick MM	Weight KG	Thick MM	Weight KG	Thick MM	Weight KG
20							1.5	0.137
25					1.5	0.173	1.9	0.212
32					1.8	0.260	2.4	0.342
40			1.8	0.334	1.9	0.350	3	0.525
50			1.8	0.422	2.4	0.552	3.7	0.809
63			1.9	0.562	3	0.854	4.7	1.290
75	1.8	0.642	2.2	0.782	3.6	1.220	5.6	1.820
90	1.8	0.774	2.7	1.130	4.3	1.750	6.7	2.610
110	2.2	1.160	3.2	1.640	5.3	2.610	8.2	3.900
125	2.5	1.480	3.7	2.130	6	3.340	9.3	5.010
140	2.8	1.840	4.1	2.650	6.7	4.180	10.4	6.270
160	3.2	2.410	4.7	3.440	7.7	5.470	11.9	8.170
200	4	3.700	5.9	5.370	9.6	8.510	14.9	12.80
225	4.5	4.700	6.6	6.760	10.8	10.80	16.7	16.10
250	4.9	5.650	7.3	8.310	11.9	13.20	18.6	19.90
280	5.5	7.110	8.2	10.40	13.4	16.60	20.8	24.90
315	6.2	9.020	9.2	13.20	15	20.90	23.8	31.50
355	7	11.40	10.4	16.70	16.9	26.50	26.3	39.90
400	7.9	14.50	11.7	21.10	19.1	33.70	29.7	50.80
450	8.9	18.30	13.2	26.80	21.5	42.70		
500	9.8	22.40	14.6	32.90	23.9	52.60		
560	11	28.10	16.4	41.40	26.7	65.80		
630	12.4	35.70	18.4	52.20	30	83.20		
710	14	45.30	20.7	66.10				
800	15.7	57.20	23.3	83.90				
900	17.7	72.50	26.3	106				
1000	19.7	89.60	29.2	131				
1200	23.6	129.0	29.2	131				

UPVC

Pressure Pipes

UPVC pipe for potable water, Wastewater and industrial applications according to DIN 8062: 2009-10 indicating "Outside diameters, wall thicknesses, S/SDR series and masses

Pipe series S																					
d mm	63		25		20		16.7		63		25		20		16.7		20		16.7		
	Standard dimension ratio SDR																				
	127		51		41		34.4		26		21		17		13.6		11		9		
	e mm	Mass kg/m	e mm	Mass kg/m	e mm	Mass kg/m	e mm	Mass kg/m	e mm	Mass kg/m	e mm	Mass kg/m	e mm	Mass kg/m	e mm	Mass kg/m	e mm	Mass kg/m	e mm	Mass kg/m	
20															1.5	0.139	1.9	0.168	2.3	0.199	
25														1.5	0.177	1.9	0.215	2.3	0.255	2.8	0.299
32											1.6	0.243	1.9	0.280	2.4	0.347	2.9	0.405	3.6	0.489	
40								1.6	0.307	1.9	0.355	2.4	0.442	3.0	0.533	3.7	0.642	4.5	0.761		
50						1.5	0.366	2.0	0.469	2.4	0.560	3.0	0.678	3.7	0.821	4.6	0.995	5.6	1.180		
63				1.6	0.491	1.9	0.571	2.5	0.739	3.0	0.866	3.8	1.080	4.7	1.310	5.8	1.571	7.0	1.850		
75			1.5	0.556	1.9	0.683	2.2	0.793	2.9	1.010	3.6	1.240	4.5	1.520	5.6	1.850	6.8	2.191	8.4	2.640	
90			1.8	0.785	2.2	0.957	2.7	1.150	3.5	1.460	4.3	1.770	5.4	2.180	6.7	2.640	8.2	3.172	10.1	3.800	
110	1.8	0.964	2.2	1.180	2.7	1.410	3.2	1.660	4.2	2.140	5.3	2.650	6.6	3.240	8.1	3.910	10.0	4.700	12.3	5.640	
125	1.8	1.100	2.5	1.500	3.1	1.840	3.7	2.160	4.8	2.750	6.0	3.390	7.4	4.130	9.2	5.040	11.4	6.094	14.0	7.280	
140	1.8	1.230	2.8	1.860	3.5	2.310	4.1	2.690	5.4	3.470	6.7	4.240	8.3	5.180	10.3	6.300	12.7	7.593	15.7	7.280	
160	1.8	1.410	3.2	2.440	4.0	2.990	4.7	3.490	6.2	4.550	7.7	5.550	9.5	6.750	11.8	8.230	14.6	9.963	17.9	11.900	
180	1.8	1.590	3.6	3.060	4.4	3.710	5.3	4.430	6.9	5.660	8.6	6.970	10.7	8.540	13.3	10.400	16.4	12.589	20.1	15.000	
200	1.8	1.770	3.9	3.670	4.9	4.560	5.9	5.440	7.7	7.020	9.6	8.640	11.9	10.500	14.7	12.800	18.2	15.522	22.4	18.600	
225	1.8	1.990	4.4	4.670	5.5	5.770	6.6	6.850	8.6	8.810	10.8	10.900	13.4	13.400	16.6	16.200	20.5	19.640	25.2	23.500	
250	2.0	2.430	4.9	5.730	6.2	7.220	7.3	8.430	9.6	10.912	11.9	13.300	14.8	16.400	18.4	20.000	22.7	24.152	27.9	23.500	
280	2.2	3.030	5.5	7.210	6.0	7.810	8.2	10.600	12.0	15.100	13.4	16.800	16.8	20.800	20.6	25.100	25.4	30.300	31.3	36.400	
315	2.5	3.830	6.2	9.150	7.7	11.200	9.2	13.300	13.5	19.200	15.0	21.200	18.7	26.000	23.2	31.800	28.6	38.300			
355	2.8	4.790	7.0	11.600	8.7	14.300	10.4	17.000	15.2	24.300	16.9	26.800	21.1	33.100	26.1	40.200					
400	3.2	6.190	7.9	14.700	9.8	18.100	11.7	21.400	17.1	30.800	19.1	34.200	23.7	41.800	29.4	51.000					
450	3.6	7.760	8.8	18.400	11.0	22.800	13.2	27.200	19.2	38.900	21.5	43.300	26.7								
500	4.0	9.510	9.8	22.700	12.3	28.300	14.6	33.400	21.4	48.100	23.9	53.400	29.7								
560	4.4	11.800	11.0	28.500	13.7	35.300	16.4	42.000	23.9	60.100	26.7	66.800									
630	5.0	14.900	12.3	35.900	15.4	44.600	18.4	53.000	26.9	76.100	30.0	84.400									
710	5.6	18.800	13.9	45.600	17.4	56.800	20.7	67.100	30.3	96.600											
800	6.3	23.900	15.7	58.000	19.6	72.000	23.3	85.100													
900	7.1	30.300	17.6	73.100	22.0	90.700	26.3	108.00													
1000	7.9	37.200	19.6	90.400	24.5	112.00	29.2	133.00													
1200	9.5	35.600	23.5	130.00	29.4	165.00															

UPVC Pressure Pipes

UPVC Pressure pipes for potable water, Wastewater and industrial applications.
According to ISO EN 1452-2(2009) and Egyptian standards 848-1/2008

Size MM	S20 (SDR41)		S16 (SDR34)		S12.5 (SDR26)		S10 (SDR21)		S8 (SDR17)		S6.3 (SDR13.6)		S5 (SDR11)	
	Thick mm	Weight kg/m	Thick mm	Weight kg/m	Thick mm	Weight kg/m	Thick mm	Weight kg/m	Thick mm	Weight kg/m	Thick mm	Weight kg/m	Thick mm	Weight kg/m
	Nominal pressure PN based design coefficient c=2.5													
	PN5		PN6		PN8		PN10		PN12.5		PN16		PN20	
25									1.5	0.177	1.9	0.215	2.3	0.255
32							1.6	0.243	1.9	0.280	2.4	0.347	2.9	0.405
40					1.6	0.307	1.9	0.355	2.4	0.442	3.0	0.533	3.7	0.642
50			1.8	0.440	2.0	0.469	2.4	0.560	3.0	0.678	3.7	0.821	4.6	0.995
63	1.6	0.491	1.9	0.571	2.5	0.739	3.0	0.866	3.8	1.08	4.7	1.31	5.8	1.57
75	1.9	0.683	2.2	0.793	2.9	1.01	3.6	1.24	4.5	1.52	5.6	1.85	6.8	2.19
90	2.2	0.957	2.7	1.15	3.5	1.46	4.3	1.77	5.4	2.18	6.7	2.64	8.2	3.17
Size MM	Nominal pressure PN based design coefficient c=2													
	PN6		PN8		PN10		PN12.5		PN16		PN20		PN25	
110	2.7	1.41	3.2	1.66	4.2	2.14	5.3	2.65	6.6	3.24	8.1	3.91	10	4.70
125	3.1	1.84	3.7	2.16	4.8	2.75	6.0	3.39	7.4	4.13	9.2	5.04	11.4	6.09
140	3.5	2.31	4.1	2.69	5.4	3.47	6.7	4.24	8.3	5.18	10.3	6.30	12.7	7.59
160	4.0	2.99	4.7	3.49	6.2	4.55	7.7	5.55	9.5	6.75	11.8	8.23	14.6	9.96
180	4.4	3.71	5.3	4.43	6.9	5.66	8.6	6.97	10.7	8.54	13.3	10.4	16.4	12.58
200	4.9	4.56	5.9	5.44	7.7	7.02	9.6	8.64	11.9	10.5	14.7	12.8	18.2	15.52
225	5.5	5.77	6.6	6.85	8.6	8.81	10.8	10.9	13.4	13.4	16.6	16.2	20.5	19.64
250	6.2	7.22	7.3	8.43	9.6	10.91	11.9	13.3	14.8	16.4	18.4	20.0	22.7	24.15
280	6.9	9.0	8.2	10.6	10.7	15.1	13.4	16.8	16.6	20.8	20.6	25.1	25.4	30.3
315	7.7	11.2	9.2	13.3	12.1	19.2	15.0	21.2	18.7	26.0	23.2	31.8	28.5	38.3
355	8.7	14.3	10.4	17.0	13.6	24.3	16.9	26.8	21.1	33.1	26.1	40.2		
400	9.8	18.1	11.7	21.4	15.3	30.8	19.1	34.2	23.7	41.8	29.4	51.0		
450	11.0	22.8	13.2	27.2	17.2	38.9	21.5	43.3	26.7	54.68	33.1	66.76		
500	12.3	28.3	14.6	33.4	19.1	48.1	23.9	53.4	29.7	67.58	36.8	82.47		
560	13.7	35.3	16.4	42.0	21.4	60.1	26.7	66.8						
630	15.4	44.6	18.4	53.0	24.1	76.1	30.0	84.4						
710	17.4	56.8	20.7	67.1	27.2	89.0								
800	19.6	72.0	23.3	85.1	30.6	113								
900	22.0	90.7	26.3	108	34.6	143								
1000	24.5	112	29.2	133										
1100	26.2	135												
1200	29.4	165												

UPVC Sewer Pipes

UPVC Pressure pipes for potable water, Wastewater and industrial applications.
According to ISO EN 1452-2(2009) and Egyptian standards 848-1/2008

Size mm	SN2 (SDR51)		SN4 (SDR41)		SN8 (SDR34)	
	Thick mm	Weight kg/m	Thick mm	Weight kg/m	Thick mm	Weight kg/m
110			3.2	1.64	3.2	1.64
125			3.2	1.82	3.7	2.13
160	3.2	2.41	4	2.91	4.7	3.44
200	3.9	3.7	4.9	4.46	5.9	5.37
250	4.9	5.65	6.2	7.06	7.3	8.31
315	6.2	9.02	7.7	11.11	9.2	13.2
355	7	11.4	8.7	14.06	10.4	16.7
400	7.9	14.5	9.8	17.8	11.7	21.1
450	8.8	18.3	11	22.53	13.2	26.8
500	9.8	22.4	12.3	28	14.6	32.9
630	12.3	35.7	15.4	43.94	18.4	52.2
710	13.9	45.3	17.4	56.15	20.8	66.1
800	15.7	57.2	19.6	71.39	23.4	83.9
900	17.6	72.5	22	89.6		
1000	19.6	89.6	24.5	110.8		

Sewer Fittings With Ring Seal

According to EN1401 - EN1329

Y °45 Reducer		Double Y °45	
75/50			75 mm
110/50			110 mm
110/75			160 mm
160/110			
200/160			
Coupling		Repair Coupling	
50 mm			110 mm
75 mm			
110 mm			
160 mm			
200 mm			
Long Reducer		End Cap	
75/50			50 mm
110/50			75 mm
110/75			110 mm
160/110			160 mm
200/160			
Cleaning Insert With Cap		Floor Trap	
75 mm			50/50
110 mm			75/50
160 mm			
Vent Cowl		Gully Trap	
75 mm			160/110
110 mm			

Sewer Fittings With Ring Seal

According to EN1401 - EN1329

Elbow °90			Elbow °90 With Access	
50 mm			75 mm	
75 mm			110 mm	
110 mm				
160 mm				
200 mm				
Elbow °45			P-Trap	
50 mm			110 mm	
75 mm				
110 mm				
160 mm				
200 mm				
Tee °90			Tee °90 With Access	
50 mm			75 mm	
75 mm			110 mm	
110 mm				
160 mm				
200 mm				
Tee °90 Reducer			Tee °90 Reducer With Access	
75/50			75 mm	
110/50			110 mm	
110/75			160 mm	
160/110				
200/160				
Double Tee °90			Y °45	
75 mm			75 mm	
110 mm			110 mm	
160 mm			160 mm	
			160 mm	
			200 mm	

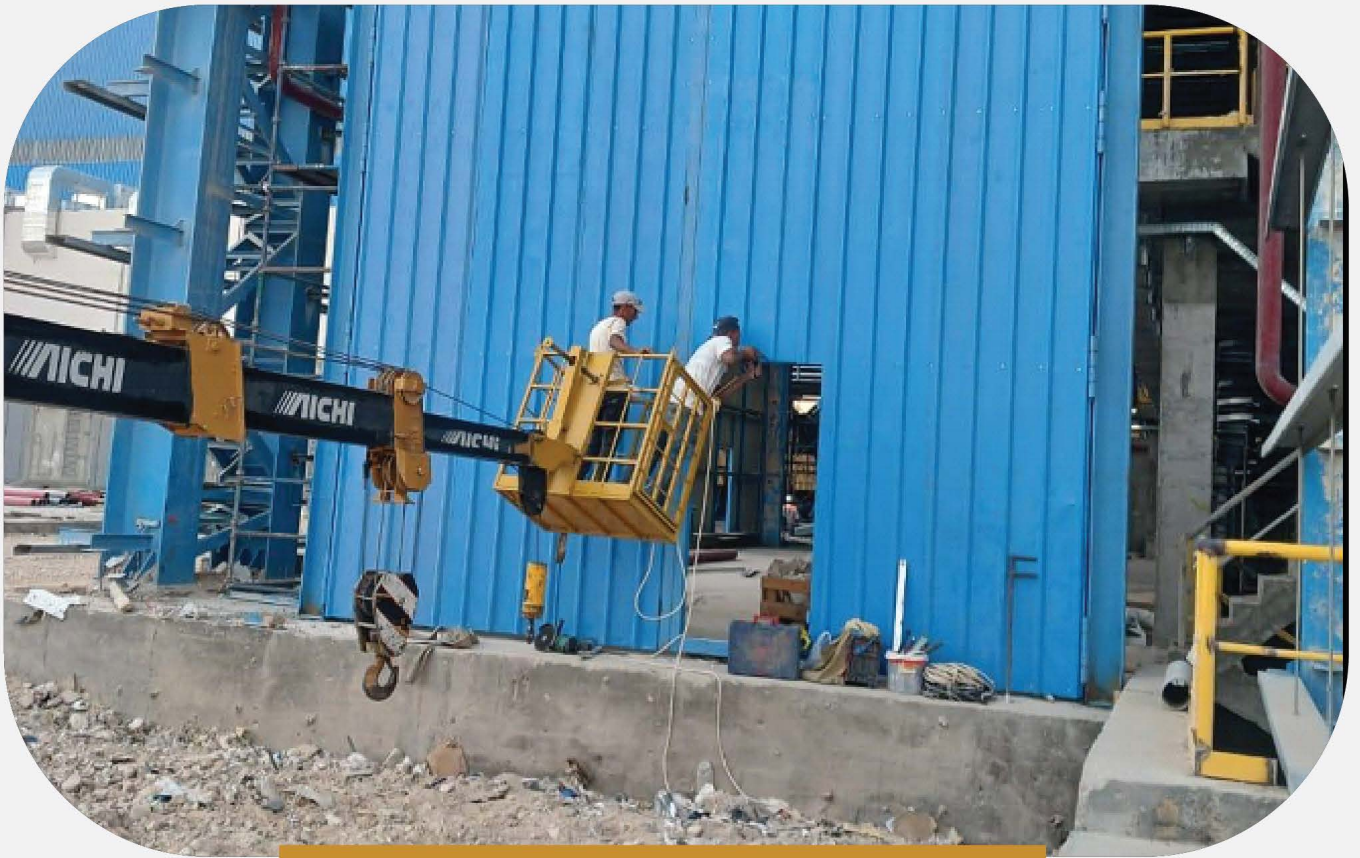
Our Projects

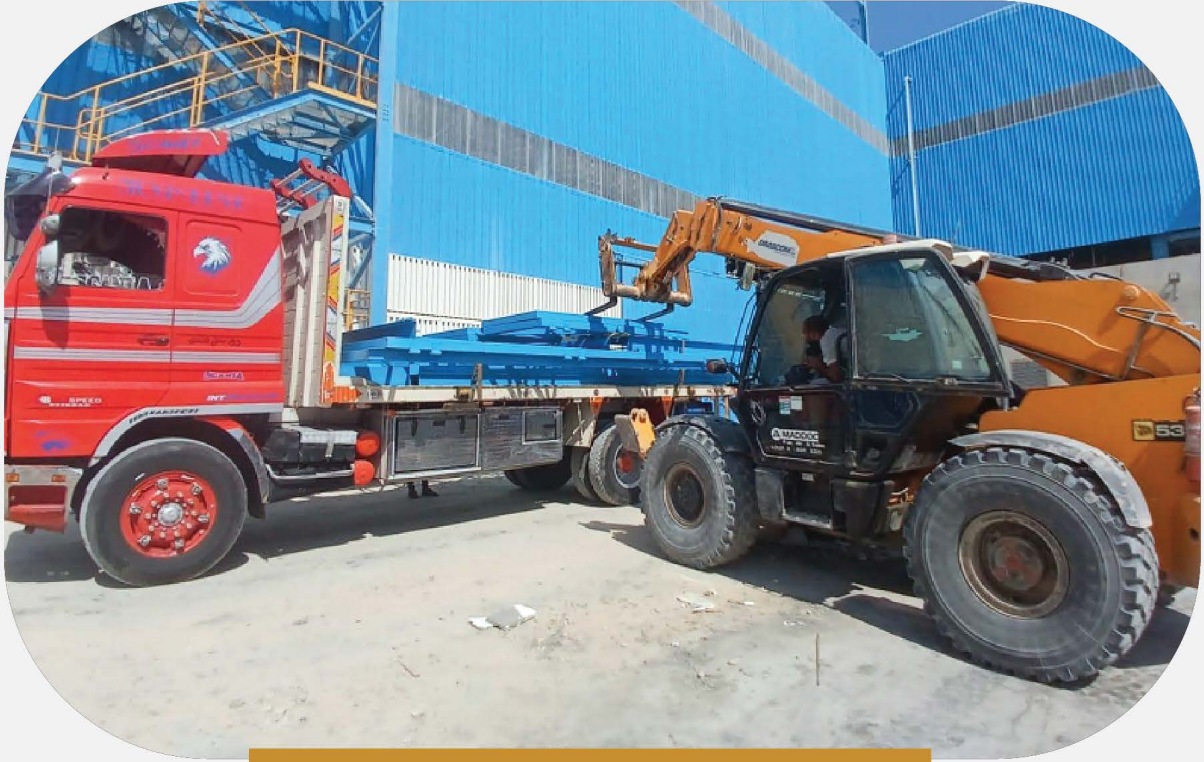
Suez Steel Plant Project – Adabiya Port, Suez

Project Description

Supply and installation of the fire protection system using seamless pipes and all related fittings, in addition to complete flanges and galvanized rainwater drainage pipes. The scope also included the fabrication and installation of galvanized steel .gratings and metal doors for the main building

Project Status: Successfully delivered







Salam Station Drainage Gratings Project

Project Description

Fabrication and supply of custom-made iron drainage gratings for Peace Station, in accordance with the required technical specifications

Project Status: Successfully delivered



PG7 Project for Sakr Factory – Arab Organization for Industrialization

Project Description:

Supply of 100,000 pieces of precision-engineered custom-made steel to meet the requirements of the PG7 Project.

Project Status: Successfully delivered.





Supply of Whitewood and Swedish Timber – Egyptian Cable Company

Project Description:

Supply of quantities of whitewood and Swedish timber to the Egyptian Cable Company, for use in the manufacturing of export-grade cable reels.

Project Status: Ongoing





Supply of Seamless Piping Line for Badr Station – National Petroleum Company

Project Description:

Supply and implementation of a complete seamless piping line for Badr Station, affiliated with the National Petroleum Company.

Project Status: Successfully delivered



Supply of Lighting Fixture Components for Sharm El-Sheikh Road

Project Description:

Manufacture and supply of 40,000 steel components for lighting fixtures, delivered to the Electronics Factory of the Arab Organization for Industrialization.

Project Status: Successfully delivered





Supply of Cold-Rolled Steel to ENCiD – Robiki

Project Description:

Supply of approximately 100 tons of cold-rolled steel to ENCiD, in support of manufacturing operations within the Robiki Free Zone.

Project Status: Successfully delivered





Supply of Construction and Living Essentials for the El-Dabaa Project

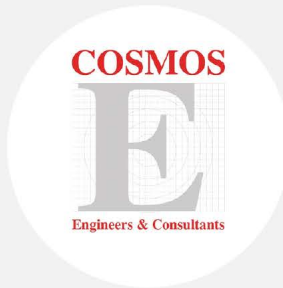
Project Description:

Supply of construction and living essentials in collaboration with ASKIM Company, in support of the El-Dabaa Nuclear Power Project.

Project Status: Successfully delivered



Our Clients



Our Clients



Electro Cable Egypt
الكابلات الكهربائية المصرية



THANKYOU

Contact Us

+(20) 1119807761

+(20) 22672926

sales@supplycloudeg.com

www.supplycloudeg.com